



**QH** *Quintin Hogg Trust*  
*Quintin Hogg Memorial Fund*  
*Since 1903*

**ASSORTED  
SKILLS +  
TALENTS**

# A vision for Chiswick

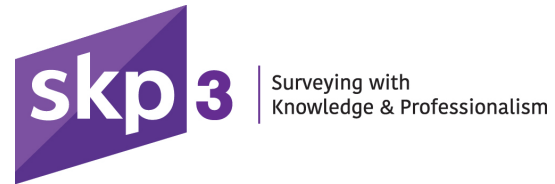
## The Quintin Boat House: Extension Stage 4

On behalf of the Quintin Hogg Trust + Quintin Hogg Memorial Fund Trustees

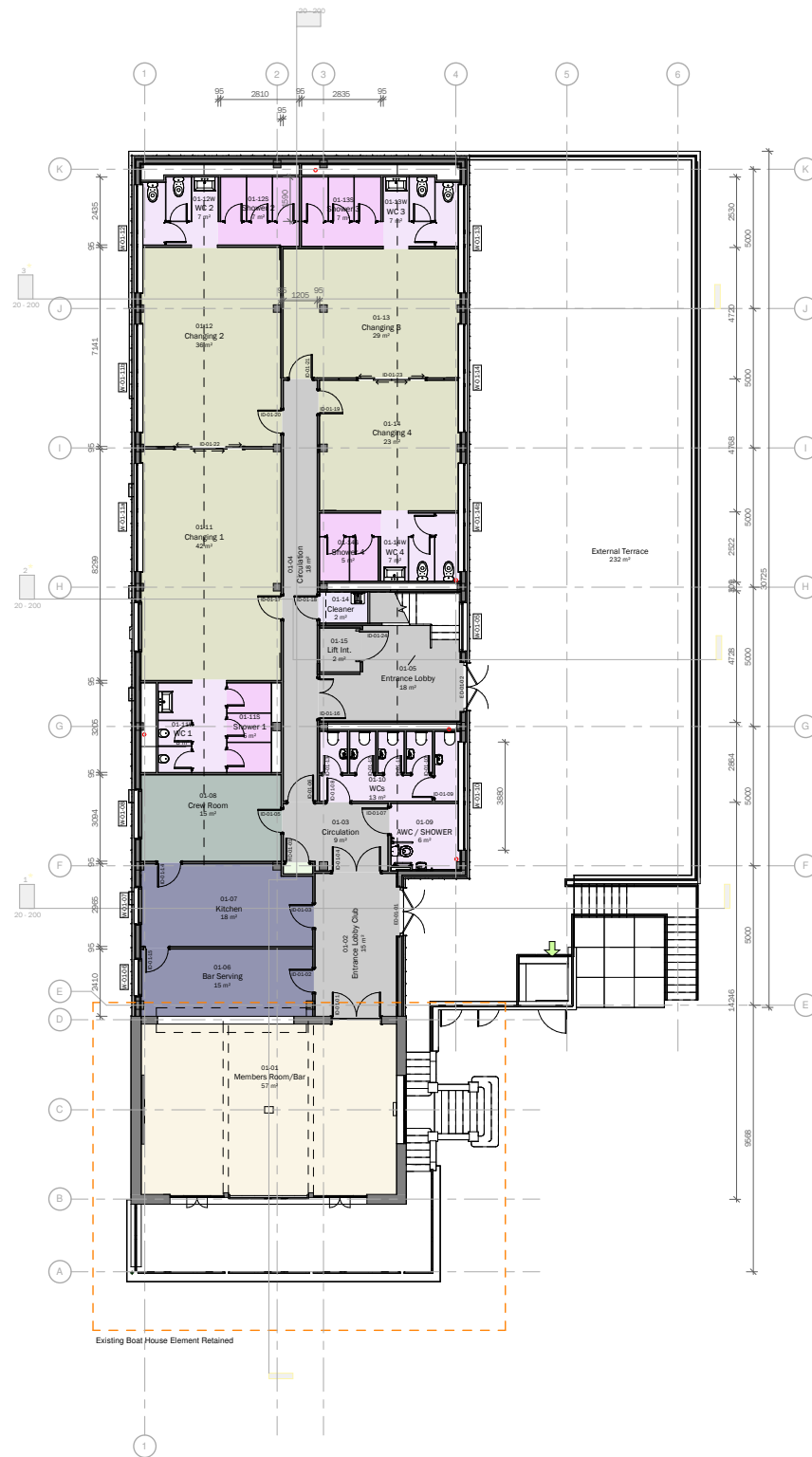
29th April 2024

Architecture  
Design  
Strategy  
Narrative  
Communication

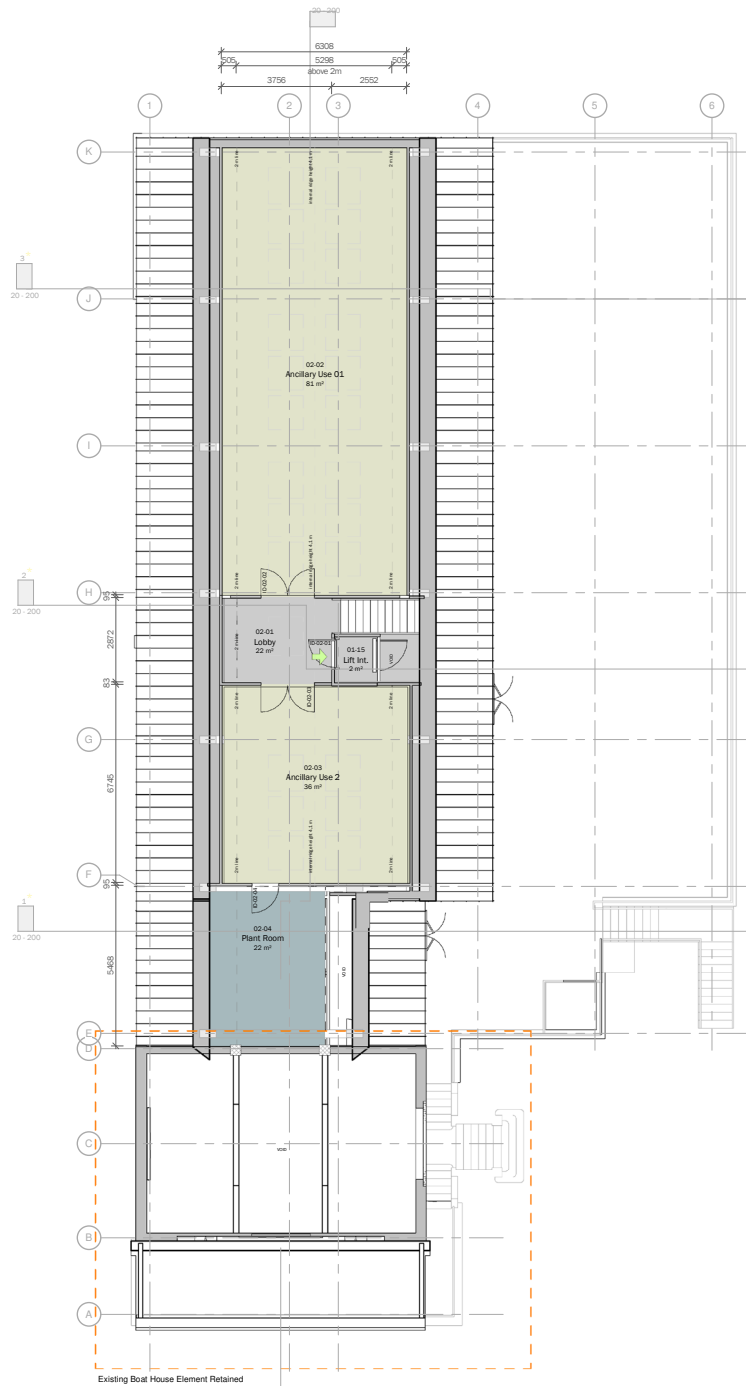
[www.assortedskillstalents.com](http://www.assortedskillstalents.com)



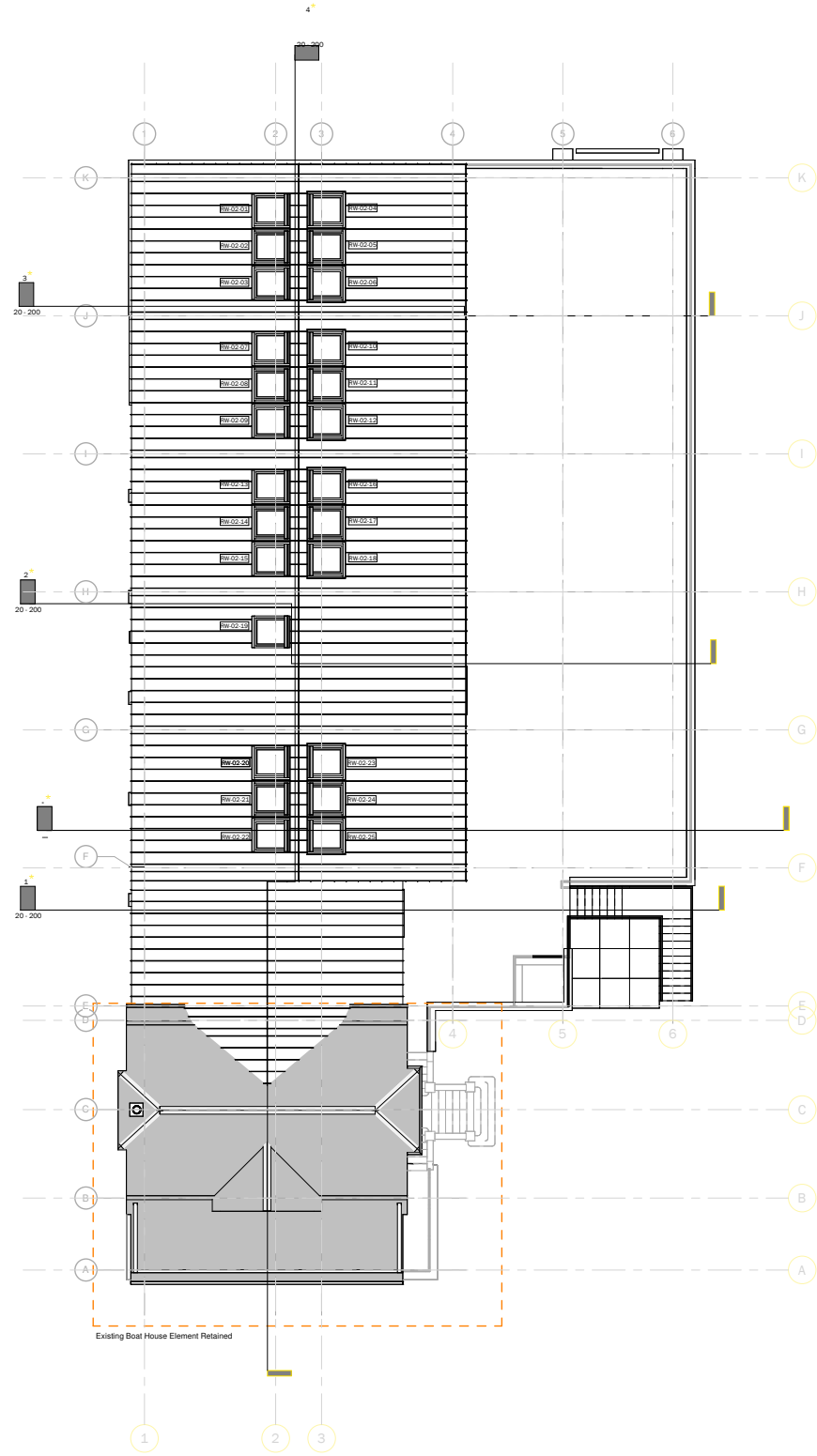




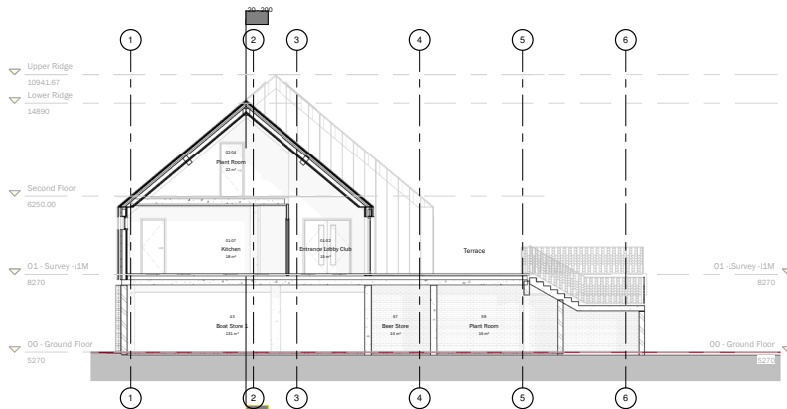
Proposed first floor plan



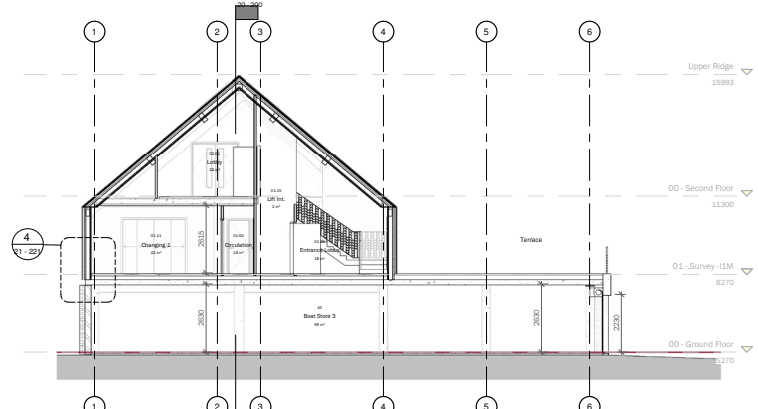
Proposed ancillary storage plan



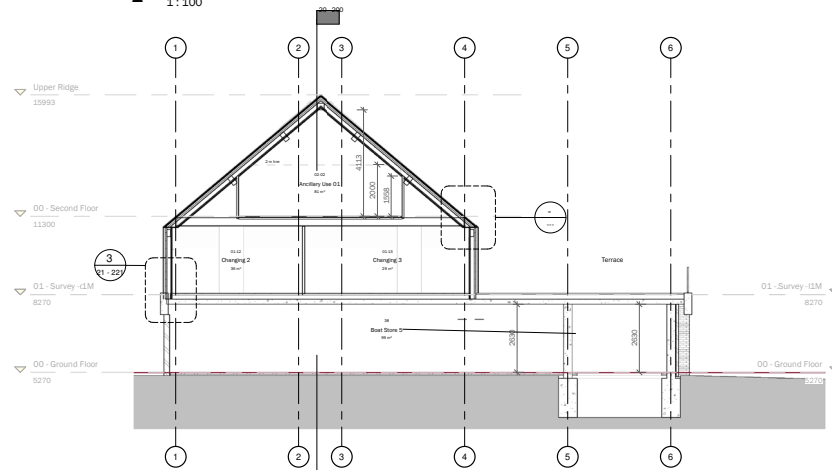
Proposed roof plan



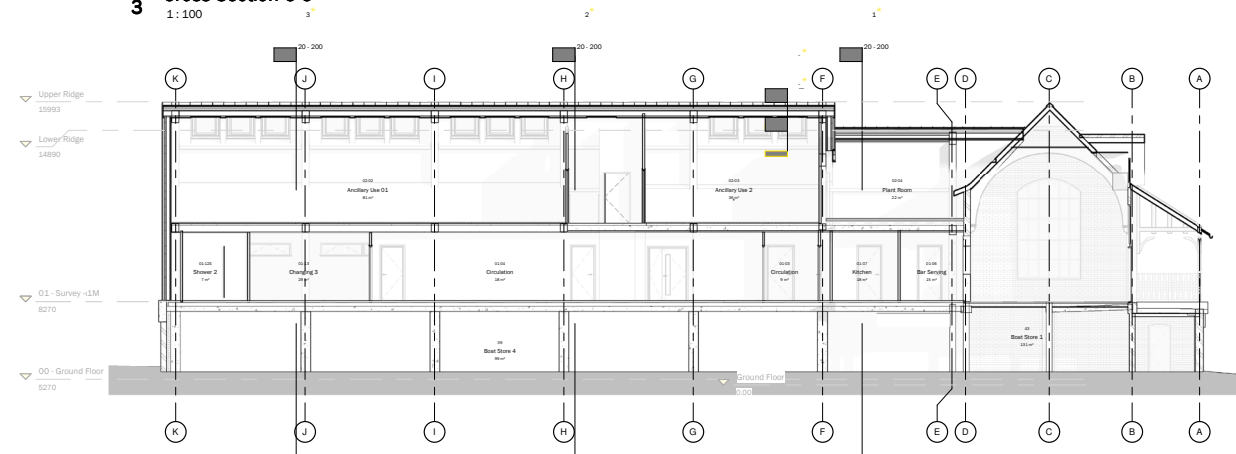
**1** Cross Section C-A  
1:100



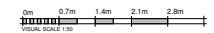
**2** Cross Section C-B  
1:100



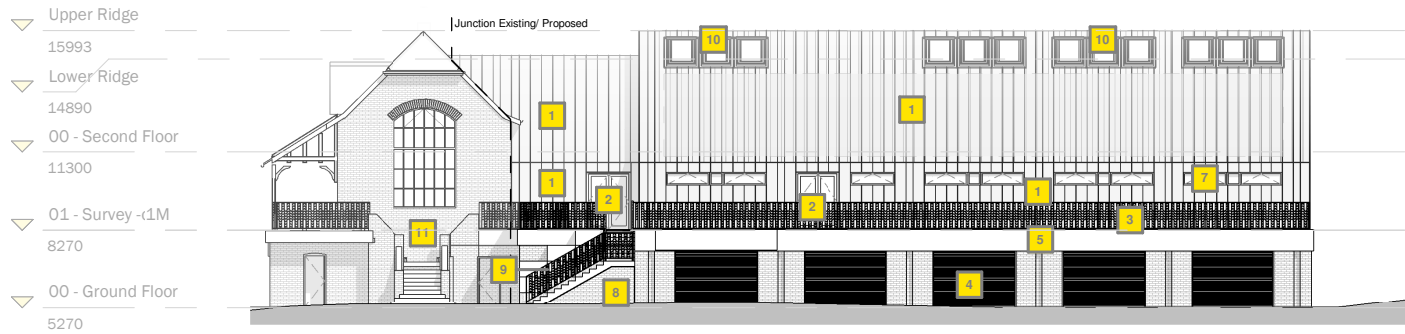
**3** Cross Section C-C  
1:100



**4** Long Section L-1  
1:100



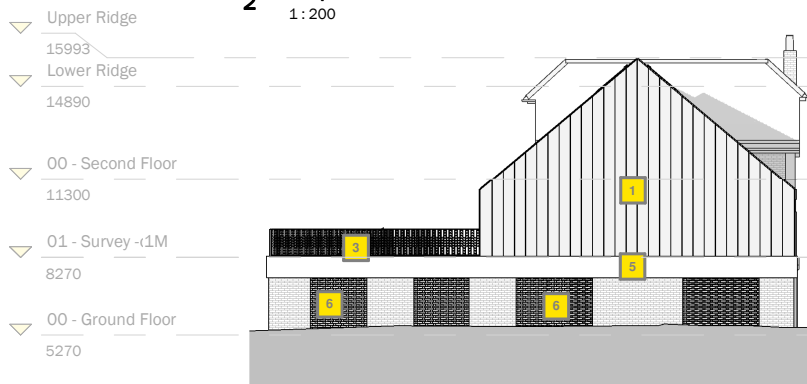
Proposed technical sections



**1\*** Proposed Elevation - South East  
1 : 200



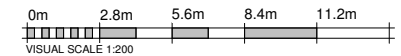
**2\*** Proposed Elevation - North West  
1 : 200



**3\*** Proposed Elevation - North East  
1 : 200



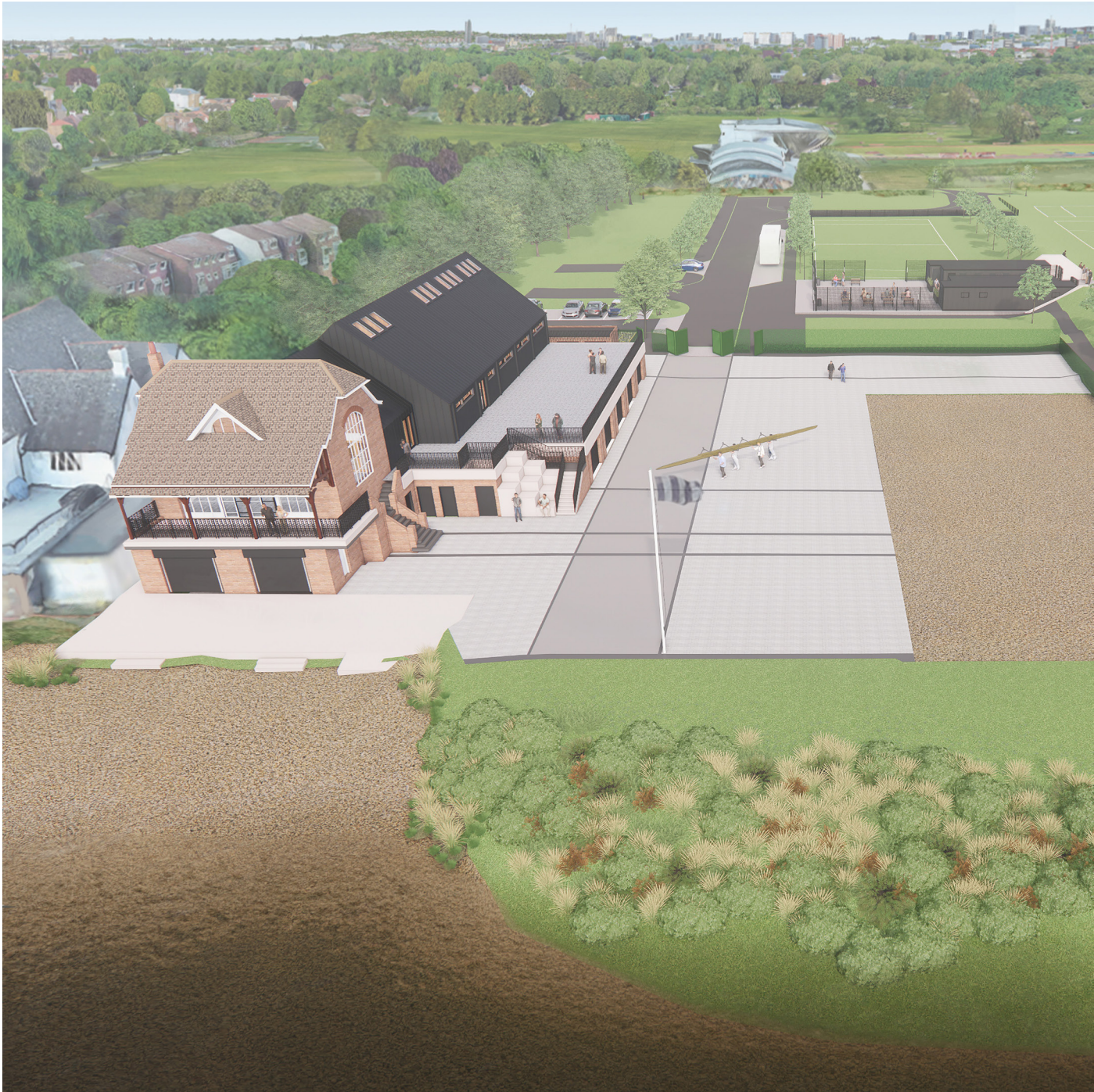
**4\*** Proposed Elevation - South West  
1 : 200



- Materials Key**
- 1** Zinc Standing Seam cladding at 430mm vertical joint spacing, colour Anthracite.
  - 2** Black Steel Framed Glazed Double Door Entrance
  - 3** Black PPC Steel Balustrade, 'vertical rail and chevron', to external terraces.
  - 4** Black Metal External 'garage' doors. Roller shutter to match proposed boat club
  - 5** Exposed concrete band with brickwork below to match existing brickwork.
  - \*** **6** Feature lattice brickwork panels.
  - 7** Black PPC aluminium windows, double glazed.
  - 8** Exposed concrete stair
  - 9** Exposed concrete 'podium' steps
  - 10** Double glazed rooflights, VELUX or equal, external colour anthracite.
  - 11** EXISTING RETAINED ELEMENTS
- Area for PV installation, amount & model to be confirmed.

## Proposed technical elevations





View from River Thames looking to the north



View from river  
bank looking  
across boat yard



Boatman's view of QBC from the river



ASSORTED  
SKILLS +  
TALENTS

Inverdrue House  
Rothiemurchus  
Aviemore  
PH22 1QH  
+44 1479 452 101

385 Oxford Street  
London  
W1C 2NB  
+44 20 7268 3119

3 Cobourg Street  
Manchester  
M1 3GY  
+44 161 713 0517

Architecture  
Design  
Strategy  
Narrative  
Communication  
[www.assortedskillstalents.com](http://www.assortedskillstalents.com)